

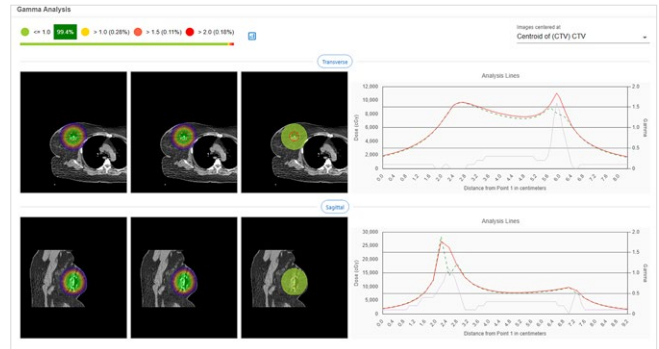
Specialized module

RadCalc Brachytherapy

The RadCalc Brachytherapy stand-alone package is designed to streamline and enhance the accuracy of dose verification for HDR, LDR, and permanent implant brachytherapy treatments. By utilizing advanced 3D visualization, DICOM-based plan imports, and comprehensive dose comparison tools, the module provides clinicians with the accuracy and efficiency needed for high-quality brachytherapy treatments⁽¹⁾.

Features

- Plan import and independent source positioning**
 RadCalc facilitates brachytherapy plan import via DICOM RT and provides an independent source positioning for HDR, LDR, and Permanent Implant treatments.
- Advanced evaluation tools**
 Source visualization, with optional CT dataset and RT structures, zoom and rotation, ability to adjust source positions, for detailed plan analysis ensuring deviations in source placement can be accounted for accurately.
- 3D dose volume verification and point dose calculations**
 Supports 3D dose volume and point dose checks for HDR, LDR, and Permanent Implants, using TG-43-compliant calculations.
- Creation of treatment schedules and source configuration**
 Enables flexible treatment scheduling with decay adjustments and offers comprehensive source configuration, including import and export capabilities.
- DVH (Dose Volume Histogram) comparison**
 Allows side-by-side DVH comparisons against protocols with graphical and tabular analysis for advanced dose tracking and treatment verification.
- Streamlined workflow and printout capabilities**
 Provides detailed printouts with various view options, ensuring organized documentation for clinical review.



Requirements

General hardware requirements for RadCalc (main program)

	Network install	Local install - not recommended
Operating System	Microsoft® Windows® Server 2016, 2019 or 2022	Microsoft® Windows® 10, and 11, 32-bit and 64-bit operating systems
Processor	8 Core or better	8 Core or better
RAM	16 GB or more	
Network	5 Gbps connection, bandwidth to the client should be 10 mbps with a latency not exceeding 50 ms	
Video	Minimum resolution 1024 × 768 px (scaling up to 125 %) and minimum 1 GB video memory (RAM)	
Graphics	OpenGL 1.1 support required	OpenGL 1.1 support required
Hard drive space	1TB SSD available, varies with quantity and type of patient data	512 GB available, varies with quantity and type of patient data

Contact us!

LifeLine Software, Inc.
 102 N College Ave Ste 1014
 75702-7287 Tyler, TX
 United States of America
 P +1 903 207 4298
 E sales.radcalc@lap-laser.com
 www.radcalc.com

¹ RadCalc Classic: The Original Comprehensive Secondary Dose Calculation Software for Radiation Therapy

RadCalc and LAP are registered trademarks of LAP in several countries worldwide, including the USA and EU. All other trademarks mentioned in this document are registered trademarks of the companies referred to in this context. These trademarks as well as designations of other companies and products, are used for identification purposes only (e.g. to inform about the compatibility). Third parties' use of any of these trademarks may infringe the rights of the respective owners.