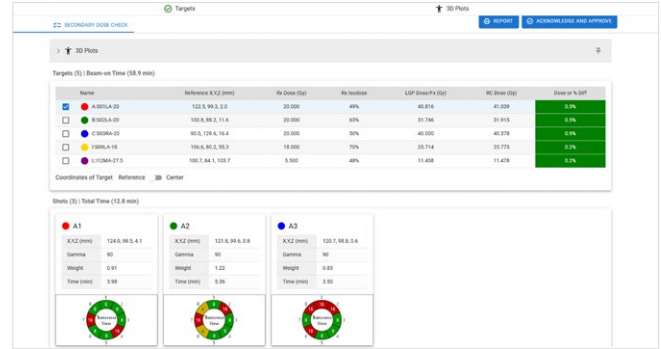




# Specialized module

# RadCalc Gamma Knife

The RadCalc Gamma Knife® stand-alone package is designed to deliver precise and reliable point dose verification for the model 4C, Perfexion™, and Icon™ treatment machines, utilizing versions 10 and 11 of the Leksell GammaPlan® (LGP) planning system<sup>(1)</sup>. By combining advanced 3D visualization, dose computation, and independent verification methods, this module enhances accuracy and efficiency in the treatment planning and verification process for Gamma Knife® radiosurgery.



## Features

- Plan import and 3D visualization**  
 RadCalc imports plans from GammaPlan® seamlessly, providing 3D visualization of skull and shot positions for simplified analysis.
- Accurate dose computation for different Gamma Knife® Models**  
 Supports precise dose calculations for models 4C, Perfexion™, and Icon™, utilizing data from skull scaling instrument measurements or CT/MRI images.
- Independent calculation and verification**  
 RadCalc performs fully independent dose calculations and verification, separate from Elekta's system, ensuring unbiased and accurate treatment validation.
- Distance to agreement (DTA) computation**  
 Offers automatic DTA adjustments and sampling radius changes to maintain dose accuracy even in complex scenarios.
- Comprehensive printout options**  
 Provides detailed printouts in spreadsheet or visual formats, facilitating thorough documentation and review of treatment plans.

## Requirements

### General hardware requirements for RadCalc (main program)

	Network install	Local install – not recommended
<b>Operating System</b>	Microsoft® Windows® Server 2016, 2019 or 2022	Microsoft® Windows® 10, and 11, 32-bit and 64-bit operating systems
<b>Processor</b>	8 Core or better	8 Core or better
<b>RAM</b>	16 GB or more	
<b>Network</b>	5 Gbps connection, bandwidth to the client should be 10 mbps with a latency not exceeding 50 ms	
<b>Video</b>	Minimum resolution 1024 × 768 px (scaling up to 125 %) and minimum 1 GB video memory (RAM)	
<b>Graphics</b>	OpenGL 1.1 support required	OpenGL 1.1 support required
<b>Hard drive space</b>	1TB SSD available, varies with quantity and type of patient data	512 GB available, varies with quantity and type of patient data

### Contact us!

**LifeLine Software, Inc.**  
**102 N College Ave Ste 1014**  
**75702-7287 Tyler, TX**  
**United States of America**

P +1 903 207 4298  
 E sales.radcalc@lap-laser.com

[www.radcalc.com](http://www.radcalc.com)

<sup>1</sup> RadCalc Classic: The Original Comprehensive Secondary Dose Calculation Software for Radiation Therapy

RadCalc and LAP are registered trademarks of LAP in several countries worldwide, including the USA and EU. All other trademarks mentioned in this document are registered trademarks of the companies referred to in this context. These trademarks as well as designations of other companies and products, are used for identification purposes only (e.g. to inform about the compatibility). Third parties' use of any of these trademarks may infringe the rights of the respective owners.