



Specialized module

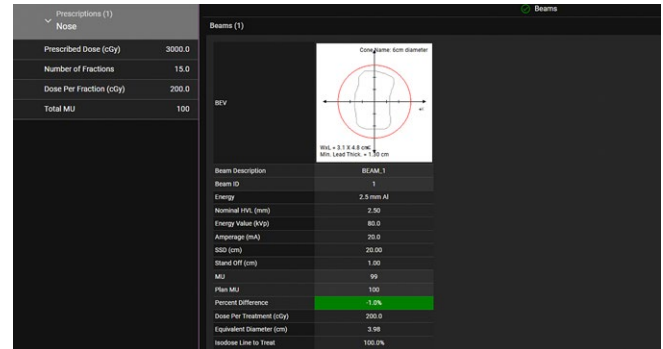
RadCalc Superficial

The RadCalc Superficial stand-alone package is designed to streamline and enhance the calculation accuracy for superficial treatments in radiation therapy. It provides a comprehensive solution for defining prescriptions, calculating treatment parameters, and ensuring precision for superficial energy applications.

Features

Supports many treatment systems and workflows

- Define treatment based on the isodose line or depth of treatment.
- Add multiple beams, choose superficial energy, and select from various cone shapes (square, rectangle, circle, oval).
- Visual display of cone and cutout information.
- Incorporates stand off and backscatter material thickness into inverse square corrections, providing accurate corrections for dose fall-off due to varying treatment distances and patient materials.



Comprehensive physics setup

- Customize parameters such as standard source-to-surface distance (SSD), minimum cutout diameter, and superficial energy settings for accurate treatment calculations⁽¹⁾.
- Define and input cone factors and backscatter material thickness for each energy.
- Backscatter data is energy-specific and dependent on SSD and material thickness.
- Point dose (PDD) data for superficial energies is adjustable based on radii and SSD conditions.

Requirements

General hardware requirements for RadCalc (main program)

| | Network install | Local install – not recommended |
|-------------------------|---|---|
| Operating System | Microsoft® Windows® Server 2016, 2019 or 2022 | Microsoft® Windows® 10, and 11, 32-bit and 64-bit operating systems |
| Processor | 8 Core or better | 8 Core or better |
| RAM | 16 GB or more | |
| Network | 5 Gbps connection, bandwidth to the client should be 10 mbps with a latency not exceeding 50 ms | |
| Video | Minimum resolution 1024 × 768 px (scaling up to 125 %) and minimum 1 GB video memory (RAM) | |
| Graphics | OpenGL 1.1 support required | OpenGL 1.1 support required |
| Hard drive space | 1TB SSD available, varies with quantity and type of patient data | 512 GB available, varies with quantity and type of patient data |

Contact us!

LifeLine Software, Inc.
102 N College Ave Ste 1014
75702-7287 Tyler, TX

United States of America

P +1 903 207 4298

E sales.radcalc@lap-laser.com

www.radcalc.com

¹ RadCalc Classic: The Original Comprehensive Secondary Dose Calculation Software for Radiation Therapy

RadCalc and LAP are registered trademarks of LAP in several countries worldwide, including the USA and EU. All other trademarks mentioned in this document are registered trademarks of the companies referred to in this context. These trademarks as well as designations of other companies and products, are used for identification purposes only (e.g. to inform about the compatibility). Third parties' use of any of these trademarks may infringe the rights of the respective owners.

**Simply
Precise**